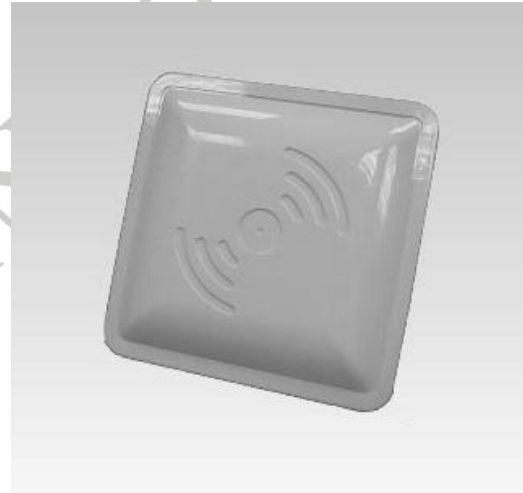


Wimax Outdoor CPE

Key Features

- Frequency Band:
 - 5.3Ghz
 - 2.5Ghz
 - 3.5Ghz
- Output Power: +23dBm at 64QAM, 7MHz and 10MHz Channel BW
- 1T2R, 2T2R MIMO Configuration
- Built-in MIMO Patch Antenna
- Main Chipset: Sequans, and PMC
- Outdoor Environmental Protected, IP67
- Temp. Range: -40°C to +55°C



Typical value @ 25 °C, unless otherwise specified.

Specifications are subject to change without prior notice.

©2010 TRANSYSTEM INC. all rights reserved.

OEM/ODM are welcome

TranSystem. Inc.

Tel: + 886-3-578-0393 Fax: + 886-3-578-4111
Inquiries: sales@transystem.com.tw

Address: No. 1-2, Li-Hsin Rd I, Science-Based Industrial Park,
Hsinchu, Taiwan, R.O.C.
Web site: <http://www.transystem.com.tw>

