

TAM-A25

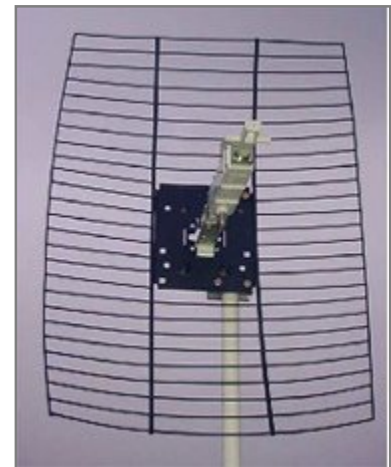
25dB MMDS Mesh Antenna

Key Feature

- Can be used with AiDC⁺, LiDC, PLC-100 and PLC200.

Specifications

Category	Description
Frequency Range	2100 ~ 2700 MHz
Gain	25 dB ± 1 dB
3 dB Beamwidth	10.0° ± 1.5°
Side Lobe Level	-18 dB ± 3 dB
Front to Back Ratio	> 31 dB
Over Back Hemisphere	21 dB Min
At 180 Degree	28 dB Min
Polarization	V / H
Reflector Material	Steel
Reflector Type	Wire Grid Parabola
Dimensions	930mm x 660mm
Weight	3.6 kg
Focal Length	385mm
Mounting Finish	Zinc Pre-Coat
Operating Temperature	-40°C to + 80°C
Accessory	Mounting Bracket



Typical value @ 25°C, unless otherwise specified.
 Specifications are subject to change without prior notice.
 ©2010 TRANSYSTEM INC. all rights reserved.

TranSystem. Inc.

Tel: + 886-3-578-0393 Fax: + 886-3-578-4111
 Inquiries: sales@transystem.com.tw

Address: No. 1-2, Li-Hsin Rd I, Science-Based Industrial Park,
 Hsinchu, Taiwan, R.O.C.
 Web site: <http://www.transystem.com.tw>

