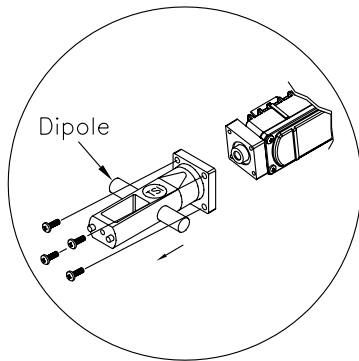




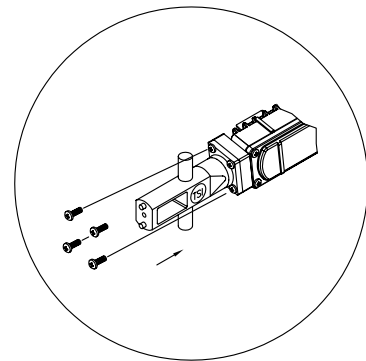
AiDC⁺ INTEGRATED with TAC-A12 CORNER REFLECTOR



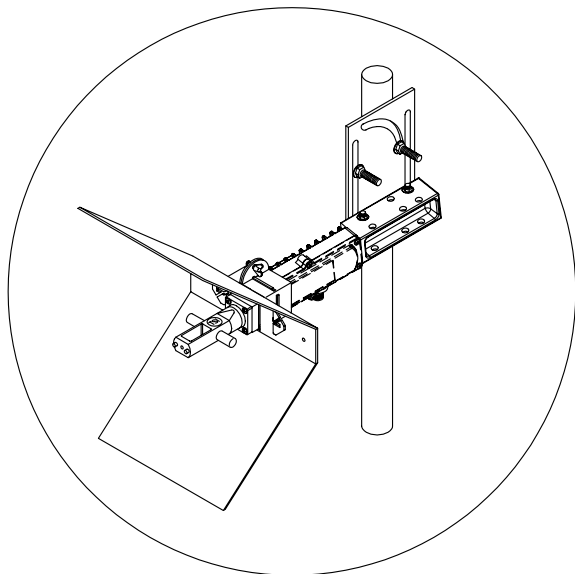
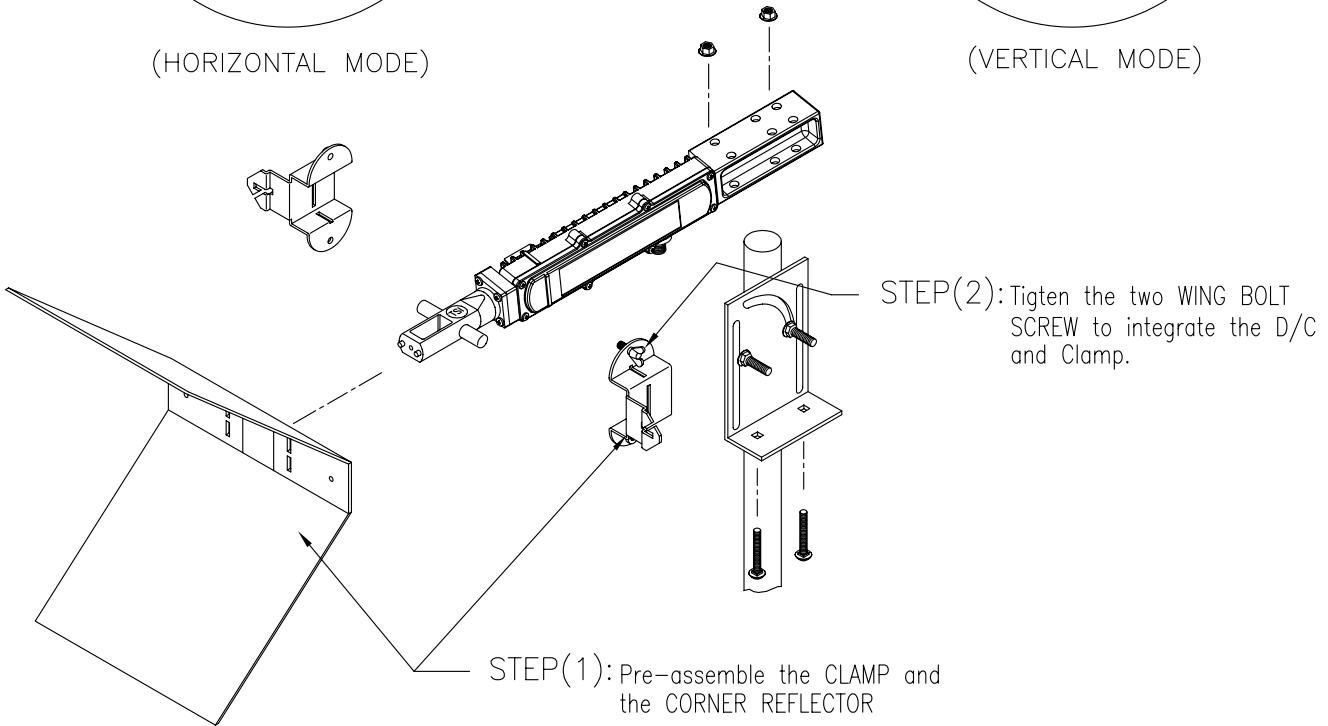
Dipole

(HORIZONTAL MODE)

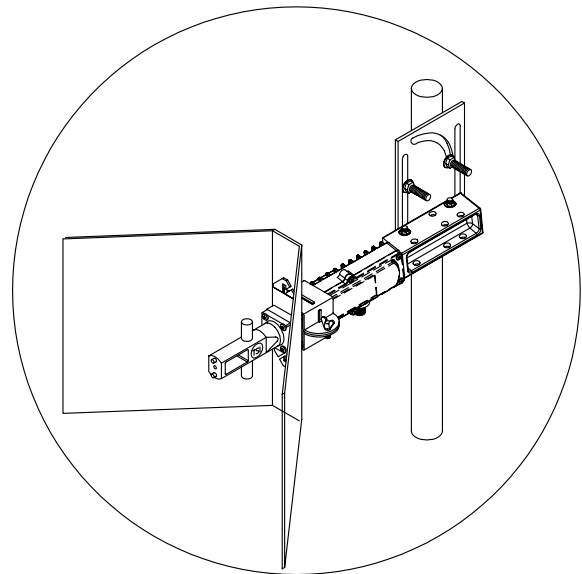
For vertical mode, turn dipole around for 90° angle.



(VERTICAL MODE)



(HORIZONTAL MODE)



(VERTICAL MODE)

NOTE: DOES NOT NEED SUB-REFLECTOR FOR CORNER REFLECTOR.